



德盈食品机械
DEYING FOOD MACHINERY

Food Processing Machinery Manufacturers



Telephone: +86 17880571984

Email: deyinmachine@gmail.com

微信: dy18938592537

Website: <https://www.dyfoodmachines.com/>

WhatsApp: +86 17880571984



德盈食品机械
DEYING FOOD MACHINERY

CONTENTS

CONTENTS

Enterprise Overview

Enterprise Certificate

Vegetable Processing Machinery

Meat Processing Machinery

Hot Kitchen Processing Machinery

Food Packing Machinery

Customized machinery

Case

Business Partners

德行天下 · 盈在未来



COMPANY PROFILE



Dongguan Deying Food Machinery Co., Ltd is a leading manufacture of food machinery in the industry. With 12 years of experience and a team of highly skilled and dedicated professionals, we have established a strong reputation for providing top-quality products and high quality at competitive prices. Company team of 150 people , including more than 70 people in the engineering team and has developed hundreds of patented products and have obtained multiple CE certificates and various patent certificates .Well-trained engineers will provide you with any technical support. In recent years, the company has exported to many countries, such as South Korea, Malaysia, Germany, the United Kingdom, etc. Our customers include McDonald's, KFC, Haidilao etc.

Our main products fall into the following categories:

1. Vegetable processing production lines: cleaning and peeling machine - sorting machine - vegetable cutting machine - vegetable washing machine - drying machine
2. Fruit Processing Machines
3. Meat Processing Machines
4. Vegetable blanching, cooling, and drying production lines
5. Food steaming and cooking equipment
6. Single machines: multi-functional vegetable cutting machines, fruit and vegetable dice, root removing machines, halving machines, peeling machines, meat cutting machines, choppers, bone sawing machines, preserved fruit dices, etc.
7. Customized machinery

ENTERPRISE CERTIFICATE

Since its establishment, our company has successively obtained GB/T 19001-2016/ISO9001:2015 international quality system certification, CE certifications, GB/T 19022-2003/ISO10012:2003 measurement management system certification, and foreign trade import and export operation rights, and has obtained over 30 patent certificates.





■ Medium - Sized leafy vegetable processing production line

The leafy vegetable processing production line is primarily used for cutting and washing leafy vegetables. Composed of five machines, the line includes a raw material conveyor and sorting station, a leafy vegetable cutting machine, a material elevator, a primary vortex cleaning and impurity removal machine, and a secondary vortex washing and disinfection machine. The entire line is designed rationally with a high level of automation, providing excellent cleaning results without causing any damage to the materials. It is an ideal processing equipment for fresh vegetable processing and central kitchens.

Size	Voltage	power	yield
10900×1050×1700mm	380V	7.2kW	500-800kg/h



■ Leaf vegetable processing production line

The leafy vegetable processing production line is primarily used for cutting, washing, and drying leafy vegetables. It consists of six machines in the following sequence: raw material conveyor and sorting station, large-scale vegetable cutting machine, material elevator, primary vortex cleaning and impurity removal machine, secondary vortex washing and disinfection machine, and vibrating dryer. The entire line is designed reasonably with a high level of automation, providing excellent cleaning results without damaging the materials. It is an ideal processing equipment for fresh vegetable processing and central kitchens.

Size	Voltage	power	yield
18500×1430×1850mm	380V	18kW	1000-1500kg/h



■ Bulb processing production line

The bulb vegetable processing production line is primarily used for cleaning, peeling, cutting, washing, and drying of root and stem vegetables. Composed of ten machines, the line is arranged in the following sequence: soaking elevator, cleaning and peeling machine, conveyor and sorting machine, slicing/shredding/dicing machine, elevator, primary vortex cleaning and impurity removal machine, secondary vortex washing and disinfection machine, and vibrating dryer. The entire line is designed rationally with a high level of automation, making it an ideal processing equipment for fresh vegetable processing and central kitchens.

Technical Parameter

Size	Voltage	power	yield
24700×1450×2130mm	380V	21.5kW	1000-1500kg/t



■ Medium Size bulb processing production line

The bulb vegetable processing production line is primarily used for cleaning, peeling, cutting, and washing of root and stem vegetables. Composed of seven machines, the line is arranged in the following sequence: cleaning and peeling machine, conveyor and sorting machine, slicing/shredding/dicing machine, pre-washing elevator, and vortex washing and disinfection machine. The entire line is designed rationally with a high level of automation, making it an ideal processing equipment for fresh vegetable processing and central kitchens.

Technical Parameter

Size	Voltage	Power	Yield
11500×1100×1400mm	380V	7.8kW	500-800kg/h



■ Vegetable non-destructive cleaning air mainline DY-WS14-S

Purpose: This equipment is designed for cleaning vegetables such as spinach, water spinach, chives, leek, and yellow chives, as well as blowing off surface water droplets.

Features: It utilizes a fan to create bubbling in the clear water, causing the vegetables to continuously tumble and be thoroughly cleaned. The water tank is equipped with a filtration system, ensuring that the filtered water is recycled for continued use.

Jet-flow vegetable washing machine (used for initial washing in the front section); Jet-flow vegetable washing machine (used for fine washing in the rear section); Air-blowing drying equipment (placed at the rear section of the fine washing tank).

This combination of equipment effectively washes and dries vegetables, ensuring high-quality and hygienic results. It is suitable for use in commercial kitchens, food processing facilities, and other settings where clean and fresh vegetables are essential.

Technical Parameter

Size	voltage	power	yield
14000 (L) × 1560 (W) × 1800 (mm)	380V	11.5kW	600-1000kg/h



■ Blanching cooling line

Purpose: This equipment is designed to perform blanching and cooling of vegetables, effectively killing bacteria on the surface of the materials through high-temperature treatment.

Technical Parameter

Size	Voltage	Power	Yield
11000×1200×1500mm	380V	6.75kW	600-1000kg/t



■ Bubble cleaning machine DY-G350

Usage: This equipment can be used to clean soft-surfaced vegetables and fruits, effectively removing sand, mud, and other impurities.

Features: With the impact of high-pressure bubble water bath, the materials rotate in the water, effectively separating sand, mud, impurities, and dirt from the surfaces of vegetables. Additionally, the water can be recycled and reused, thus enhancing the utilization rate of water resources

Technical Parameter

Size:	3500×1100×1620mm
Voltage:	380V
Power:	4.9kW
Yield:	600-1000kg/h



■ Bubble cleaning machine DY-G400A-S

Usage: It can be used for cleaning and removing sand and mud from soft surface vegetables and fruits. Features: The top is designed with a high-pressure circulating water spray pipe. While the materials are tumbling and cleaning in the water tank, high-pressure spraying is conducted simultaneously for more thorough cleaning. The discharge port is equipped with clean water spray to avoid secondary pollution. The lifting conveyor belt adopts plastic chain plate conveyor to reduce friction between materials and metal, effectively reducing material loss. The conveyor belt is designed with a scraper for thorough discharge, also serving to fix the materials. When cleaning the materials at the lowest water level inside the tank, the scraper can effectively fix the materials to prevent them from turning over or dispersing. The machine is designed with a small water tank on the side, allowing for the circulation of water inside the tank for reuse.

Technical Parameter

Size:	4000×1650×1800mm
Voltage:	380V
Power:	4.45kW
Yield:	800-1000kg/h



■ Circular tube eddy current vegetable washing machine+ozone+slag conveying DY-420B-

Usage: Used for slicing, segmenting, cleaning, disinfecting, draining, and outputting vegetable residue, removing light or small heavy impurities such as sand, dust, and small stones from vegetables. Features: The machine is divided into two main parts: cleaning and debris removal, and vibration draining. The interior of the cleaning tank is semi-circular, with no dead corners and easy to clean. There are multiple water flow control systems inside the water tank, allowing for adjustment of various water flow controls to clean a variety of fruits and vegetables. The vibration part adopts high-quality vibration arms, with high frequency and stable vibration. The overall design of the machine is reasonable, with good cleaning effect, and it belongs to the deluxe version of vortex vegetable washing machines

Technical Parameter

Size:	4200×1570×1440mm
Voltage:	380V
Power:	6.46kW
Yield:	1000-1500kg/h



■ Circular tube eddy current vegetable washing machine+drum+slag conveying DY-420B-PS

Usage: Used for slicing, segmenting, cleaning, draining, and filtering vegetable residue, removing light or small heavy impurities such as sand, dust, and small stones from vegetables. Features: The machine is divided into two main parts: cleaning and debris removal, and vibration draining. The interior of the cleaning tank is semi-circular, with no dead corners and easy to clean. There are multiple water flow control systems inside the water tank, allowing for adjustment of various water flow controls to clean a variety of fruits and vegetables. The vibration part adopts high-quality vibration arms, with high frequency and stable vibration. The overall design of the machine is reasonable, with good cleaning effect, and it belongs to the deluxe version of vortex vegetable washing machines.

Technical Parameter

Size:	4200×1570×1850mm
Voltage:	380V
Power:	6.66kW
Yield:	1000-1500kg/h



■ Eddy current vegetable washing machine+ozone DY-W420-C

Usage: Used for slicing, segmenting, cleaning, disinfecting, and draining vegetables, removing light or small heavy impurities such as sand, dust, and small stones from vegetables. Features: The machine is divided into two main parts: cleaning and debris removal, and vibration draining. The interior of the cleaning tank is semi-circular, with no dead corners and easy to clean. There are multiple water flow control systems inside the water tank, allowing for adjustment of various water flow controls to clean a variety of fruits and vegetables. The vibration part adopts high-quality vibration arms, with high frequency and stable vibration. The overall design of the machine is reasonable, with good cleaning effectiveness.

Technical Parameter

Size:	4200×250×1500mm
Voltage:	380V
Power:	3.63kW
Yield:	800-1200kg/h



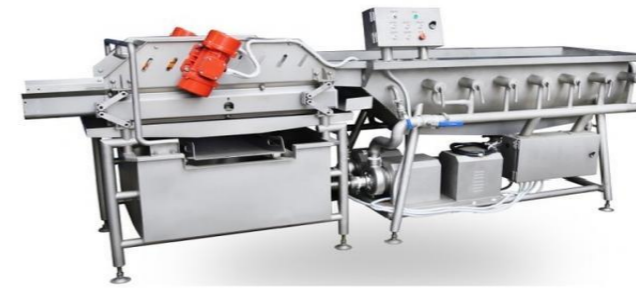
■ Small eddy current vegetable washing machine+ozone DY-W300-C

Usage: Used for slicing, segmenting, cleaning, disinfecting, and draining vegetables, removing light or small heavy impurities such as sand, dust, and small stones from vegetables.

Features: The machine is divided into two main parts: cleaning and debris removal, and vibration draining. The interior of the cleaning tank is semi-circular, with no dead corners and easy to clean. There are multiple water flow control systems inside the water tank, allowing for adjustment of various water flow controls to clean a variety of fruits and vegetables. The vibration part adopts high-quality vibration arms, with high frequency and stable vibration. The overall design of the machine is reasonable, with good cleaning effectiveness.

Technical Parameter

Size:	3000×1050×1320mm
Voltage:	380V
Power:	2.88kW
Yield:	500-800kg/h



■ Eddy current vegetable washing machine+drum DY-W420-P

Usage: Used for slicing, segmenting, cleaning, filtering vegetable residue, and draining, removing light or small heavy impurities such as sand, dust, and small stones from vegetables. Features: The machine is divided into two main parts: cleaning and debris removal, and vibration draining. The interior of the cleaning tank is semi-circular, with no dead corners and easy to clean. There are multiple water flow control systems inside the water tank, allowing for adjustment of various water flow controls to clean a variety of fruits and vegetables. The vibration part adopts high-quality vibration arms, with high frequency and stable vibration. The overall design of the machine is reasonable, with good cleaning effectiveness.

Technical Parameter

Size:	4200×250×1800mm
Voltage:	380V
Power:	3.83kW
Yield:	800-1200kg/h



■ Small eddy current vegetable washing machine+drum DY-W300-P

Usage: Used for slicing, segmenting, cleaning, filtering vegetable residue, and draining, removing light or small heavy impurities such as sand, dust, and small stones from vegetables. Features: The machine is divided into two main parts: cleaning and debris removal, and vibration draining. The interior of the cleaning tank is semi-circular, with no dead corners and easy to clean. There are multiple water flow control systems inside the water tank, allowing for adjustment of various water flow controls to clean a variety of fruits and vegetables. The vibration part adopts high-quality vibration arms, with high frequency and stable vibration. The overall design of the machine is reasonable, with good cleaning effectiveness.

Technical Parameter

Size:	3000×1050×700mm
Voltage:	380V
Power:	3.1kW
Yield:	500-800kg/h



Flip bucket double tank vegetable washing machine DY-FD170-2

Purpose: Suitable for washing leafy vegetables, root vegetables, and other materials that can be cut into segments, slices, or chunks, such as cabbage, spinach, carrots, winter melon, potatoes, etc. Features: Touch control panel for easy manual operation; two sets of combined flip oil pressure cylinders. There is a protective device when unloading materials; the drainage motor will automatically stop and can also be set for preparatory actions. The cleaning time can be set, and the unloading can be done manually or automatically in sequence.

Technical Parameter

Size:	2390×1650×1190mm
Voltage:	380V
Power:	7.5kW
Yield:	300-500kg/h



Jujube and Fruit Washing Machine

Purpose: Suitable for cleaning materials such as jujubes, olives, apples, pears, etc. Features: Primarily composed of brush groups, spraying systems, and water circulation systems. The machine is designed with varying inclinations and brush types and softness levels based on the type of material and its surface smoothness. Brushes include large brushes, small brushes, wave-shaped brushes, etc., to adapt to the cleaning needs of different materials

Technical Parameter

Size:	2500×1150×1450mm
Voltage:	380V
Power:	2.25kW
Water Consumption:	0.3T/H
Yield:	1000-2000kg/h



Single tank vegetable washing machine DY-FD170-1

Purpose: Suitable for washing leafy vegetables, root vegetables, and other materials that can be cut into segments, slices, or chunks, such as cabbage, celery, spinach, carrots, winter melon, potatoes, etc.

Technical Parameter

Size:	1730×1060×1255mm
Voltage:	380V
Power:	3kW
Yield:	300-500kg/h



Fruit and vegetable classifier

Purpose: Used for grading fruits and vegetables, such as cherry tomatoes, dates, walnuts, plums, etc., suitable for vegetable processing plants and agricultural product cooperatives. Features: This grading machine is customizable; it automatically transports materials forward and grades them automatically; it achieves good grading results, thereby improving work efficiency

Technical Parameter

Size:	4200×990×1100mm
Voltage:	380V
Power:	1.73kW
Yield:	800-1200kg/h





■ Spiral brush peeling machine DY-M220-Y

Purpose: Used for cleaning and peeling root vegetables such as potatoes, carrots, etc., and can be integrated into processing lines for root vegetables and fruits. Features: The machine body is entirely made of food-grade 304 stainless steel, making it easy to clean; it features side feeding, resulting in minimal material drop during feeding; emergency stop buttons are located at the electrical box switch, enabling immediate equipment shutdown in case of emergencies; it can be combined with other equipment for versatile usage

Technical Parameter

Size:	2940×1120×1360mm
Voltage:	380V
Power:	2kW
Yield:	600-1000kg/h



■ Potato Peeling Machine DY-M180-Y

Purpose: Suitable for cleaning and peeling root vegetables such as potatoes, fresh ginger, carrots, etc., and can also be used with soft-bristled brushes for cleaning soft-skinned fruits. Features: The machine body is made of food-grade 304 stainless steel; it employs hard brushes, which, with the combined action of friction between the material and the brush and water spraying, achieve the cleaning and peeling effect; residue is discharged onto a filter screen, which can be removed for cleaning during operation

Technical Parameter

Size:	2100×850×1000mm
Voltage:	380V
Power:	1.5kW
Yield:	800-1200 kg/h



■ Ginger and Lotus Root Peeling Machine DY-M80-Y

Purpose: Suitable for cleaning and peeling fresh ginger, lotus roots, potatoes, carrots, and other root vegetables, and can also be used with soft-bristled brushes for cleaning soft-skinned fruits. Features: The machine body is made of food-grade 304 stainless steel; it employs hard brushes, which, with the combined action of friction between the material and the brush and water spraying, achieve the cleaning and peeling effect; residue is discharged onto a filter screen, which can be removed for cleaning during operation

Technical Parameter

Size:	1100×850×1000mm
Voltage:	380V
Power:	1.1kW
Yield:	300-500kg/h



■ Continuous dewatering machine DY-T70B

Purpose: Suitable for dehydrating and drying various sliced, diced, and shredded vegetables, fruits, and other materials. Features: The machine has a top feeding and bottom discharging design, allowing for seamless connection to conveyors for continuous production; it is controlled by a microcomputer PIC system, allowing adjustable dehydration speed and cycle operation time; its cyclic operation enables automated dehydration, significantly enhancing production efficiency

Technical Parameter

Size:	7500×1600×2500mm
Voltage:	380V
Power:	7.5KW
Yield:	600-1200kg/h



Vegetable dehydrator DY-T70

Purpose: Used for dehydrating the surface of cleaned leafy vegetables or fruits and vegetables, suitable for restaurants, and vegetable distribution centers.

Features: Utilizes variable frequency centrifugal technology to accomplish surface dehydration of materials; fully open design for easy loading and unloading; smooth operation with convenient speed adjustment; main body constructed mainly of SUS304 stainless steel material

Technical Parameter

Size:	900×550×970mm
Voltage:	380V
Power:	1.5KW
Yield:	500kg/h



Vibration drainage machine DY-Z200

Purpose: Used for vibrating and draining water from the surface of vegetables after washing, conveying the material forward at a vibrating frequency.

Features: Primarily constructed with food-grade 304 stainless steel material, with an exterior that is easy to clean; the equipment can be customized for production according to individual needs, meeting the material requirements of different users.

Technical Parameter

Size:	2000×800×1000mm
Voltage:	380V
Power:	0.5kW
Yield:	600-1000kg/h



Vibration air dryer DY-Z350-5

Purpose: Used for removing water from the surface of vegetables after washing, conveying the material forward at a vibrating frequency, and subjecting it to multiple blasts of strong wind during the conveying process to blow off water droplets from the surface of the vegetables.

Features: Primarily constructed with food-grade 304 stainless steel material, with an exterior that is easy to clean; the control box can manage the equipment's fan and vibration switches. The control box is designed to be waterproof, equipped with a water trough to effectively protect the electrical components inside the control box, ensuring long-term stable operation

Technical Parameter

Size:	3500×1300×1370mm
Voltage:	380V
Power:	4.25kW
Yield:	800-1200kg/h



Turnover basket cleaning machine DY-K600-3

Usage: Suitable for cleaning the surface dirt of rubber frames and vegetable baskets.

Features: A novel continuous cleaning equipment that uses chain drive to transport objects; High pressure water is used for cleaning, and each circulating water tank is sprayed with water. The rubber frame is sprayed and rinsed simultaneously from top, bottom, left, and right directions. Each water tank is equipped with a filtering device for easy cleaning of dirt at any time. Each water tank is equipped with a sewage outlet for easy machine cleaning after operation, and there is also a total sewage outlet to accelerate the discharge of sewage and save time. Large equipment cleaning output and high cleaning rate

Technical Parameter

Size:	6000×270×1620mm
Voltage:	380V
Power:	9.75kW (不带加热)
Yield:	800-2000个/h



■ Bidirectional weighing and feeding machine

Technical Parameter

Size:	2430×700×750mm
Voltage:	380V
Power:	0.37kW
Weighing Range:	1-30kg



■ Bidirectional conveyor

Usage: Suitable for bi-directional conveying of various granular, strip, block, and irregularly shaped materials, such as cleaned and processed

fruits and vegetables, expanded foods, various snacks, etc.

Features: The body is made of food-grade 304 stainless steel, with an easy-to-clean surface; designed for bi-directional conveying.

Technical Parameter

Size:	2000×580×870mm
Voltage:	380V
Power:	0.2kW



■ Luxury hoist DY-HT148-DP

Usage: Used for lifting and conveying vegetables that are cut into threads, pieces, and segments.

Features: Mainly made of food grade 304 stainless steel material, easy to clean on the surface; The conveyor belt is made of food grade materials; The belt and frame can be quickly disassembled, making it convenient for manual cleaning; Adjustable conveyor belt speed.

Technical Parameter

Size:	2860×850×1500mm
Voltage:	380V
Power:	0.37kW
Yield	800-1000kg/h



■ Soaking hoist DY-J603-S

Usage: Used for lifting and conveying materials, capable of soaking materials and softening the soil on the surface of materials to a certain extent.

Features: The entire body is made of food grade 304 stainless steel material, with a water sandblasting and sandblasting texture on the surface that is easy to clean; The conveyor belt is made of food grade materials; Belt speed Adjustable.

Technical Parameter

Size:	1780×880×1460mm
Voltage:	380V
Power:	1.1kW
Yield:	600-1200kg/h



■ Pre washing hoist DY-Y57-27S

Purpose: Used for cleaning, starch filtration, and conveying of vegetables cut into strips, slices, and segments.

Features: Primarily constructed with food-grade 304 stainless steel material, with an exterior that is easy to clean; the conveyor belt is made of food-grade material; conveyor belt speed is adjustable; equipped with a spraying device at the lifting section, with a water collection tray and water pump installed below to collect and recycle water; bubble pipes are installed at the bottom of the water tank to create a rolling water effect

Technical Parameter

Size:	2700×1100×1550mm
Voltage:	380V
Power:	1.1kW
Yield:	500-1000kg/h



■ Double layer six station selection table DY-6W-2P

Purpose: Used for preliminary processing of materials, manually removing the roots and withered leaves from the bottom of vegetables, automatic conveying, and can be used in conjunction with vegetable processing production lines.

Features: Constructed entirely with food-grade 304 stainless steel material; the conveyor belt is made of food-grade material; conveyor belt speed is adjustable; the equipment can be customized for production according to individual needs, meeting the material requirements of different users

Technical Parameter

Size:	2700×800×880mm
Voltage:	380V
Power:	0.65kW
Yield:	800-1200kg/h



■ Single layer six station selection table DY-6W-P

Usage: Used for pre-processing materials, manually removing the roots and withered leaves from the bottom of vegetables, and then automatically conveying them, suitable for use with vegetable processing production lines.

Features: All components are made of food-grade 304 stainless steel; the conveyor belt is made of food-grade materials; conveyor belt speed is adjustable; the equipment can be customized to meet the material requirements of different users.

Technical Parameter

Size:	2600×830×830mm
Voltage:	380V
Power:	0.2kW
Yield:	600-1000kg/h



■ Flipping and pouring machine

Purpose: Suitable for assisting in flipping and dumping materials from containers, making it easier and more efficient to feed materials from elevated positions.

Features: The body is made of food-grade 304 stainless steel, with a water-sprayed sandblasted surface for easy cleaning and a textured feel; customizable equipment; reduces manual loading burden, improving work efficiency.

Technical Parameter

Size:	1600×1420×1100mm
Voltage:	380V
Power:	2.2kW



Roller conveyor

Purpose: Used for material transportation, facilitating manual inspection, and improving the quality of finished products.

Features: The body is made of food-grade 304 stainless steel, with an easily cleanable surface; customizable equipment to meet the requirements of different materials; assists in manual inspection of materials, reducing the defect rate

Technical Parameter

Size:	2430×890×1140mm
Voltage:	380V
Power:	0.55kW



Customized soaking elevator

Purpose: Used for lifting and conveying materials, capable of immersing materials and softening the soil on the surface of the materials to a certain extent.

Features: The body is made entirely of food-grade 304 stainless steel, and the exterior has a water-sprayed sandblasted texture for easy cleaning. The conveyor belt is made of food-grade material, and the speed of the conveyor belt is adjustable.

Technical Parameter

Size:	3250×1200×2100mm
Voltage:	380V
Power:	0.55kW
Yield:	600-1200kg/h



Turnover vehicle DY-Z210-3

Purpose: Used for lifting and conveying materials, capable of immersing materials and softening the soil on the surface of materials to a certain extent.

Features: The entire body is made of food-grade 304 stainless steel, with a water-sprayed sandblasted surface for easy cleaning; the conveyor belt is made of food-grade material; the speed of the conveyor belt is adjustable.

Technical Parameter

Size:	(直径Φ×高)950×765mm
接料高度:	700mm



Customized potato peeler

Purpose: Used for washing and peeling vegetables such as potatoes, carrots, and can be connected to processing lines for root vegetables and fruits.

Features: The body is entirely made of food-grade 304 stainless steel, making it easy to clean. This machine features side feeding, minimizing the drop in material during feeding. An emergency stop button is located at the electrical box switch, allowing for immediate equipment shutdown in case of emergencies. It can be combined with other equipment for use

Technical Parameter

Size:	3000×1000×2400mm
Voltage:	380V
Power:	1.7kW
Yield:	800-1000kg/h



■ Cabbage Core Removing Machine DY-QX60

Purpose: Used for removing the core of vegetables such as Chinese cabbage and cabbage.

Features: Utilizes manual feeding, where regardless of the diameter of the vegetable, whether large or small, manually aligning the vegetable with the center of the blade effectively removes the core.

Technical Parameter

Size:	763×500×1120mm
Voltage:	220V
Power:	0.25kW
Yield:	10~15只/分



■ Fruit and vegetable cutting machine

Purpose: Used for halving cucumbers, eggplants, white radishes, and other vegetables.

Features: Suitable for slicing various fruits and vegetables, easy to operate; primarily made of food-grade 304 stainless steel material.

Technical Parameter

Size:	710*660*1140mm
Voltage:	380V
Power:	1.1kW



■ Cabbage and winter melon cutting machine DY-BV70-P

Purpose: Mainly used for cutting vegetables such as Chinese cabbage, cabbage, and winter melon in half, suitable for vegetable processing plants and pickled food processing plants.

Features: Cuts vegetables evenly and without waste by slicing them in half from the middle of the conveyor belt

Size:	2200×900×1500mm
Voltage:	380V
Power:	1.1KW
Material size:	直径100-300mm
Yield:	1500-2000颗/时



■ Vegetable Rooting Machine DY-B30-S

Usage: Used for cutting vegetable roots, such as celery, cabbage, spinach, etc., suitable for large food processing plants, clean vegetable production lines, etc.

Features: The animal feed is carried forward by the conveyor board. After the vegetables pass through a fixed position of the cutterhead, the roots of the vegetables are cut out from the waste port, and the preserved vegetables are moved forward

Size:	2600×1000×1400mm
Voltage:	380V
Power:	1.1kW
Yield	1000-1800kg/h
Length:	5公分内可以调节



Large leafy vegetable cutter DY-306B

Purpose: It is used for cutting long strips of green onions, garlic, leeks, celery, Chinese cabbage, cabbage, bok choy, etc. The cutting length can be adjusted from 1 to 50mm without the need to change the blade set. It can be connected to automated production lines and is suitable for the food processing industry, central kitchens, etc.

Features: Mainly made of food-grade 304 stainless steel for easy cleaning; the belt is made of food-grade PU material with a width of 200mm; equipped with an intelligent touch screen control system, allowing control of equipment startup and shutdown; the equipment has safety induction function, and whenever the blade guard or belt guard is opened, the equipment will directly enter emergency stop mode

Technical Parameter

Size:	1480×750×1240MM
Voltage:	380V
Power:	1.5kW
Yield:	1000-1500kg/h



Large wire wiping machine DY-C2

Purpose: Used for shredding or slicing bulbous vegetables such as potatoes, celery, and radishes. It can be used for ingredient processing in catering companies and pickle factories.

Features: The design is concise with no exposed nuts; the driving area and cutting area are completely separated, meeting high hygiene standards and facilitating maintenance; the cutting head adopts a quick installation design, making the machine easy to clean

Technical Parameter

Size:	1095×805×1525mm
Voltage:	380V
Power:	1.5kW
Yield:	1000-3000kg/h



Cabbage slicer DY-ZY43

Purpose: Can be used to cut ingredients such as Chinese cabbage, cabbage, winter melon, and pumpkin into square pieces or cubes.

Features: Mainly made of food-grade 304 stainless steel, easy to clean surface; the cutting specifications of the equipment can be customized to meet the material requirements of different users.

Technical Parameter

Size:	910×590×1440mm
Voltage:	380V
Power:	0.75kW
Yield:	600-1000kg/h



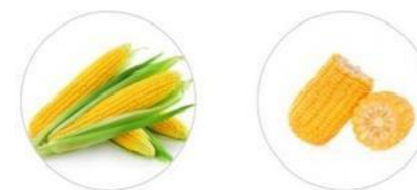
Corn cutting machine DY-309A

Purpose: Used for cutting long strips of vegetables such as corn, celery, and spinach. Suitable for vegetable processing plants and pickled food processing factories.

Features: Mainly made of food-grade 304 stainless steel, easy-to-clean surface; cutting length can be customized but not adjustable; consistent cutting length with fast cutting speed.

Technical Parameter

Size:	2000×830×1055mm
Voltage:	380V
Power:	0.75kW
Yield:	1000-3000kg/h



Shanghai Qingde Rooting Machine DY-30-2P

Purpose: Used for removing the roots of vegetables such as Shanghai green, celery, spinach, and scallions.

Features: The conveyor belt drives the vegetables forward, and after passing through a fixed position cutter, the roots of the vegetables are cut off and discharged from the waste outlet, while the remaining vegetables continue to be conveyed forward. The length of cutting the roots can be adjusted appropriately. Suitable for large-scale food processing plants and vegetable production lines.

Technical Parameter

Size:	2620×1010×1230mm
Voltage:	380V
Power:	1.5kW
Yield:	2000-3000kg/h
Root length:	adjusted within 55mm



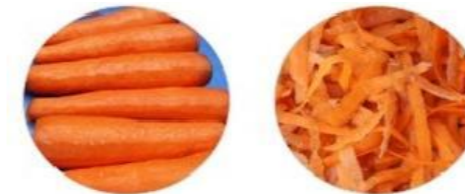
Carrot Peeling Machine DY-X12

Purpose: Used for peeling the skin of carrots, with manual feeding and automatic discharge, providing fast peeling speed and excellent peeling results.

Features: Mimics manual peeling, resulting in a smooth and even surface on the peeled material, achieving a peeling rate of around 95%; multi-directional moving casters facilitate equipment mobility; the body is made of food-grade 304 stainless steel, making it easy to clean the exterior.

Technical Parameter

Size:	1980×512×1062mm
Voltage:	380V
Power:	50W
Air Pressure:	0.8MPa
Yield:	40-60个/分钟



Potato Peeling Machine DY-X10

Purpose: Mimics manual peeling, resulting in a smooth and even surface on the peeled material, achieving a peeling rate of around 95%.

Features: The main body is primarily made of food-grade 304 stainless steel; the rotation time is adjustable, typically peeling 10 kilograms of potatoes in about 45 seconds; after peeling, the potato is automatically discharged with the outlet opening and closing.

Technical Parameter

Size:	1100×840×1200mm
Voltage:	380V
Power:	1.5kW
Yield:	300-500kg/h



White Radish Peeling Machine DY-X11

Purpose: Used for peeling fresh white radishes without any dirt or sand on the surface.

Performance: Simple and convenient operation, high speed, and high output, significantly reducing labor costs; the peeling rate of radishes can reach around ninety percent; the machine is easy to disassemble and wash, ensuring safe operation.

Technical Parameter

Size:	2449×580×1096mm
Voltage:	380V
Power:	0.75kW
Yield:	30~40根/分钟
Material:	Diameter 50-75mm, Length 270mm or more



Winter melon peeler DY-DX80-1

Purpose: Mainly used for peeling cylindrical melons such as winter melon and pumpkin, removing the surface skin quickly. Suitable for vegetable processing plants and pickled food processing factories.

Features: The peeling thickness of this peeling machine is adjustable; the automatic cyclic cutting of the blade group up and down ensures high efficiency, achieving a peeling rate of around 95%; the machine is easy to disassemble and wash, with simple and safe operation during use, ensuring hygiene.

Technical Parameter

Size:	700×700×2700mm
Voltage:	380V
Power:	0.8kW
Yield:	40-60个/时

注：机器需外接一个800瓦空压机



Double ended winter melon peeler DY-DX80-2

Purpose: Mainly used for peeling winter melons, capable of quickly removing the surface skin, suitable for vegetable processing plants and pickled food processing factories.

Features: This peeling machine has an adjustable peeling thickness for convenience; the automatic cyclic cutting of the blade group up and down ensures high efficiency, with a peeling rate of around 95%; the machine is easy to disassemble and wash, with simple and safe operation during use, ensuring hygiene.

Technical Parameter

Size:	1340×700×2700mm
Voltage:	380V
Power:	1.6kW
Yield:	80-120个/时

注：机器需外接一个800瓦空压机



Horizontal Winter Melon Peeling Machine DY-HHX300

Purpose: Mainly used for peeling winter melons, capable of quickly removing the surface skin. Suitable for vegetable processing plants and pickled food processing factories.

Features: The blade disk adopts a rotating method to perform 360° rotation cutting on the material. At the discharge end, there is a rolling cutter to cut off the skin wrapped around the material, facilitating the complete separation of the skin from the material. This avoids the need for manual cleaning when the skin wraps around the material, or integrated into a production line.

Technical Parameter

Size:	2925×980×1450mm
Voltage:	380V
Power:	2.6KW
Speed:	15m/min
Yield:	3000-4000kg/h



Dried fruit dicer DY-801

Purpose: Suitable for cutting apple slices, apricot slices, strawberry slices, pear slices, dried mango, and other materials.

Features: This machine consists of a circular blade group and a spiral blade group. Specifications can be customized for production; specifications such as 44mm, 55mm, 88mm, 1010mm, etc., can be customized according to requirements.

Technical Parameter

Size:	1650*630*1050mm
Voltage:	380V
Power:	1.5KW
Yield:	300-500kg/h



■ Multifunctional vegetable cutter DY-301

Usage: Suitable for cutting leafy vegetables into sections, such as long strips of onions, garlic, leeks, celery, Chinese cabbage, cabbage, etc., and for cutting bulbs into shredded, sliced, and diced pieces, such as radishes, potatoes, sweet potatoes, onions, eggplants, etc.

Features: Versatile machine capable of cutting a variety of vegetables to meet the requirements of most restaurants; produces vegetables with standardized specifications and low loss rates; the speed of the conveyor belt and cutter is controlled by a frequency converter, allowing for adjustable lengths of cut vegetables; emergency stop function when the safety guard is opened; the blade disk for roots and stems is made of magnesium-aluminum alloy, superior in performance.

Technical Parameter

Size:	1170×560×1260mm
Power:	1.35kW
Voltage:	220V
Yield:	300-1000kg/h
Weight:	135kg
Belt:	上皮带117*600mm, 下皮带118*1200mm



■ Bulb cutting machine DY-312

Usage: It can slice, shred, and dice root and tuber vegetables such as potatoes, sweet potatoes, squash, onions, and eggplants in one go.

Features: By changing the blade disk, it can produce products of different specifications and shapes with simple operation and easy cleaning; the blade disk for roots and tubers is made of magnesium-aluminum alloy, superior in performance.

Technical Parameter

Size:	750×520×900mm
Voltage:	220V
Power:	0.75kW
Yield:	200-600kg/h



■ Double frequency conversion vegetable cutter DY-305

Usage: Suitable for cutting long strips of onions, garlic, leeks, celery, Chinese cabbage, cabbage, spinach, etc. Suitable for central kitchens and vegetable processing industry.

Features: The speed of the conveyor belt and the cutter is controlled by a frequency converter, which can adjust the length of the cut vegetables; when the safety guard is opened, the machine will stop running immediately to ensure safety.

Technical Parameter

Size:	760×550×1280mm
Voltage:	220V
Power:	0.64kW
Yield:	500-800kg/h
Length:	1-60mm adjustable
Upper belt length:	117*600mm
Lower belt length:	118*1200mm
Weight:	100kg



■ Large vegetable cutter DY-306

Usage: Suitable for cutting vegetables into long strips, such as onions, garlic, chives, celery, Chinese cabbage, cabbage, spinach, etc. It is suitable for central canteens and vegetable processing professionals.

Features: The speed of the conveyor belt and cutter is controlled by a frequency converter, allowing for adjustable lengths of cut vegetables; the machine stops operation immediately when the safety guard is opened; by replacing the shredding blade disk, it can also be used for shredding root vegetables; it has a high cutting output and can be connected to vegetable processing assembly lines for continuous operation.

Technical Parameter

Size:	980×760×1370mm
Voltage:	220V
Power:	1.3kW
Yield:	800-1500kg/h
Belt:	165×825mm 167×1600mm
Cutting Length:	1-60mm adjustable
Weight:	160kg





Rolling knife vegetable cutter DY-309

Usage: It is used to cut leafy vegetables into segments of the same length, suitable for large food processing plants and vegetable production lines.

Features: It has high output and fast speed; it utilizes food-grade conveyor belts to transport materials, ensuring cleanliness and hygiene.

Technical Parameter

Size:	2200×870×1130mm
Voltage:	380V
Power:	1.5kW
Yield:	2000-3000kg/h
Length:	30mm以上



Large vegetable and fruit dicer DY-1500

Usage: It can dice vegetables and fruits at once, common materials include carrots, potatoes, onions, winter melons, pineapples, apples, etc.

Features: The cut surface of the materials is smooth and aesthetically pleasing; the machine frame is made of SUS304 stainless steel, corrosion-resistant; there is a micro switch at the feeding port for safe operation; fast dicing speed, high output; can be connected to vegetable processing lines for use.

Technical Parameter

Size:	1370×1110×1250mm
Voltage:	380V
Power:	1.5kW
Yield:	1000-2000kg/h
Cutting Size:	5-20mm adjustable
Weight:	280kg



Vegetable and fruit dicer DY-800

Technical Parameter

Size:	700×580×250mm
Voltage:	380V
Power:	0.75kW
Yield:	500-800kg/h
Cutting Size:	3-20mm adjustable
Weight:	100kg



Large garlic puree machine DY-307

Usage: It can crush garlic, ginger, spinach, onions, and lotus roots into paste or finely chopped pieces. Additionally, it can also process fresh or pickled chili into small fragments or paste, making it suitable for seasoning factories, kitchens, and restaurants.

Features: The number of blades can be freely added for convenient use; the large feeding port facilitates easy feeding; easy to disassemble and clean.

Technical Parameter

Size:	800×380×1000mm
Voltage:	380V
Power:	2.2kW
Yield:	500-800kg/h



■ Cutting machine DY-501

Used for shredding or slicing vegetables, commonly processed vegetables include radishes, cucumbers, lettuce, etc. Features: Smooth and uniform cutting surface of the material; uniform thickness and width of the cuts; high cutting output, high efficiency.

Technical Parameter

Size:	700×500×850mm
Voltage:	220V
Power:	0.75kW
Shred specifications:	2mm,2.5mm,3mm,4mm,4.5mm可选不可调换
Shred Length:	cut up to 20cm
Yield:	500-800kg/h



■ Ginger shredded ginger slice machine DY-503

Usage: Used for shredding or slicing ginger, garlic, potatoes, and mushrooms. Features: Smooth and uniform cutting surface of the material; uniform thickness and width of the cuts.

Technical Parameter

Size:	510×450×600mm
机械动力:	220V单相
Power:	0.37kW
切断能力:	150-250kg/h
切断形式:	离心【细切丝、薄切片】
加工丝尺寸:	1-5mm
机台重量:	约41kg



■ Automatic French fries cutting machine DY-502

Technical Parameter

Size:	1030×640×900mm
Voltage:	380V
Power:	1.5kW
Yield:	600-800kg/h
Cut length:	8-20mm optional
Weight:	125KG



■ Carrot head and tail removal machine

Usage: Can be used to remove the heads and tails of cucumbers, carrots, and corn, and cut them into sections.

Features: Root cutting is automated, completing the process automatically in one go, cleanly and without damage.

Long service life and high efficiency of the equipment.

Main body and shell made of 304 stainless steel, which meets international hygiene standards.

Technical Parameter

Size:	3000*820*1560mm
Voltage:	380V
Power:	0.75kW
Yield:	5000-7000个/小时



■Floor standing meat and tendon cutting machine DY-208

Usage: Used for deboning, tenderizing, and flattening various types of boneless pork and beef cuts to improve their appearance and taste. Features: Replaces manual pounding; can debone and tenderize meat simultaneously, allowing for customization based on different types of meat; made entirely of stainless steel with a safety inlet design; high quality and high output.

Technical Parameter

Size:	410×510×920mm
Voltage	380V
Power:	2.2kW
Yield	300-500kg/h
轮料最大尺寸:	200mm
物料厚度:	1-20mm

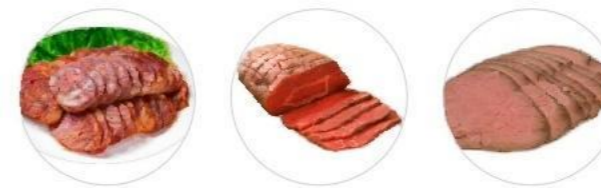


■Cooked meat slicer DY-304B

Usage: Used to slice cooked boneless char siu, waxed meat, braised dishes, pig skin, beef, pork intestines, etc. Suitable for use in meat processing plants, chain restaurants, and meat markets. Features: Thickness of slices can be adjusted; frequency converter for speed control, ensuring uniform thickness of slices; special blade design results in smooth cutting surface with minimal debris; equipped with a safety button, the entire equipment automatically shuts off when the door is opened; innovative design with detachable conveyor belt for easy assembly, disassembly, and cleaning, eliminating hygiene blind spots; automatic material feeding conveyor belt for convenient continuous operation.

Technical Parameter

Size:	1560×560×1000mm
Voltage:	380V
Power:	1.5kW
Yield:	500-800kg/h



■Frozen pork rib cutting machine DY-303B

Usage: Suitable for cutting frozen pork ribs, front ribs, back ribs, lamb chops, frozen meat, etc., at temperatures below -5 degrees Celsius.

Features: Utilizes thickened stainless steel square tube supports, made of high-quality 304 stainless steel material. Equipped with an independent feeding mechanism module for quick disassembly and cleaning, and built-in waterproof electrical control box. Features independent safety protection cover and safety induction switch for enhanced safety during operation.

Technical Parameter

Size:	1080×595×1085mm
Voltage	380V
Power:	1.5kW
Yield:	500-800kg/h
Inlet size:	300×50mm
Cutting frequency:	83次/分钟
Cutting size:	25-30mm optional



■Poultry cutting machine DY-300

Usage: Suitable for slicing bone-in poultry into strips in one pass or into cubes (dice) in two passes, such as birds, pigeons, chickens, ducks, etc. Used in fast food distribution centers, large canteens, and food processing plants.

Features: Cuts into strips in one pass and into cubes in two passes; the entire machine body is meticulously crafted from thickened 304 stainless steel, presenting an attractive appearance and being resistant to corrosion; the blade assembly is easy to disassemble and can be rinsed directly with water for simple cleaning.

Technical Parameter

Size:	659×540×935mm
Voltage:	380V
Power:	3kW
Yield:	600-800kg/h





■Diced meat cutter DY-350

Usage: Used to dice boneless fresh meat and partially thawed meat.

Features: Adjusts thickness cutting knob to achieve stepless speed regulation of the push rod, meeting different cutting thickness requirements; when cutting with a single blade, the meat push rod moves in steps to ensure accurate cutting dimensions. High production output.

Technical Parameter

Size:	1350×700×1000mm
Voltage:	380V
Power:	3.2kW
Yield:	500-600kg/h
Cutting groove size:	84×84×350mm

切割尺寸：5, 6, 7, 8, 9, 11, 13, 16, 20, 27, 可根据要求提供其它尺寸



■Diced meat cutter DY-550

Usage: Used for dicing boneless fresh meat and partially thawed meat, with the smallest diced meat size being 5mm and the largest being 30mm. It is an essential piece of equipment in food processing.

Features: Adjustable thickness cutting knob allows for stepless speed adjustment of the push rod to meet different cutting thickness requirements. When cutting with a single blade, the meat push rod moves in steps to ensure the correct cutting dimensions.

Technical Parameter

Size:	1940×980×1100mm
Voltage:	380V
Power:	3.7kW
Yield:	700-900kg/h
Cutting groove size:	120×120×550mm

可选切割尺寸：5, 6, 7, 8, 9, 11, 13, 16, 20, 27, 30 可根据要求提供其它尺寸



■Large shredded meat slicer DYR-10A

Usage: It can slice or shred boneless fresh meat, such as pork and chicken, in one go.

Features: This machine has a compact structure and an attractive appearance, featuring optimized hygiene design for easy cleaning. Equipped with swivel casters with brakes for easy mobility and improved production efficiency. The machine utilizes dual-blade cutting to process meat without damaging food fibers or texture, resulting in fresh and uniform slices or shreds with high efficiency.

Technical Parameter

Size:	604×620×1030mm
Voltage:	380V
Power:	2.2kW
Yield:	800kg/h
Cutting Length:	2-30mm optional



■Shredded Meat Slicer DYR-6

Usage: Can slice or shred pure lean meat in one go.

Features: The machine has a compact structure and an attractive appearance, featuring optimized hygiene design for easy cleaning. Equipped with swivel casters with brakes for easy mobility and improved production efficiency. The machine utilizes dual-blade cutting to process meat without damaging food fibers or texture, resulting in fresh and uniform slices or shreds with high efficiency.

Technical Parameter

Size:	510×510×870mm
Voltage:	220V
Power:	1.1kW
Yield:	500kg/h
Cutting Length:	2.5-20mm optional



■Fresh meat slicer DY-KT300

Usage: Suitable for once slicing boneless fresh meat into strips, and secondarily cutting it into chunks.

Features: The equipment has quick-detachable front and rear conveyor racks, conveyor belts, and customizable interchangeable blade assemblies; it can be cleaned with high-pressure water guns; it can continuously slice materials, resulting in large cutting output.

Technical Parameter

Size:	1960×580×1000mm
Voltage	380V
Power:	1.5kW
Yield:	800-1200kg/h
切割尺寸:	20-70mm optional



■Medium and large bone sawing machines

Usage: Suitable for cutting various types of animal bones, frozen meat, etc. Ideal for use in restaurants, factory canteens, central kitchens, etc.

Features: Maximizes the lifespan of each saw blade; the automatic tensioning device ensures optimal tension adjustment; equipped with a sensor safety auto-stop switch; adjustable saw blade protection cover with up-and-down movement.

Technical Parameter

型号	Size(mm)	工作台尺寸(mm)	工作台高度(mm)	加工食品高度或宽度(mm)	锯带长度(mm)	Voltage(V)	Power(KW)
DY-310A	865×735×1700	675×550	900	380×213	2218	220/380	1.5
DY-360A	880×770×1867	790×565	960	440×245	2580	220/380	1.5
DY-500A	970×955×2100	875×760	960	566×345	3370	220/380	2.2



■Small bone sawing machine

Usage: Suitable for cutting various types of animal bones, frozen meat, etc. Ideal for use in restaurants, factory canteens, central kitchens, etc.

Features: Maximizes the lifespan of each saw blade; the automatic tensioning device ensures optimal tension; equipped with a safety stop switch with sensors; adjustable saw blade protection cover with up-and-down movement.

Technical Parameter

型号	Size(mm)	工作台尺寸(mm)	工作台高度(mm)	加工食品高度或宽度(mm)	锯带长度(mm)	Voltage(V)	Power(KW)
DY-210A	630×515×950	595×415	353	226×151	1650	220/380	1.1
DY-280A	630×515×1040	595×415	353	226×151	1830	220/380	1.1



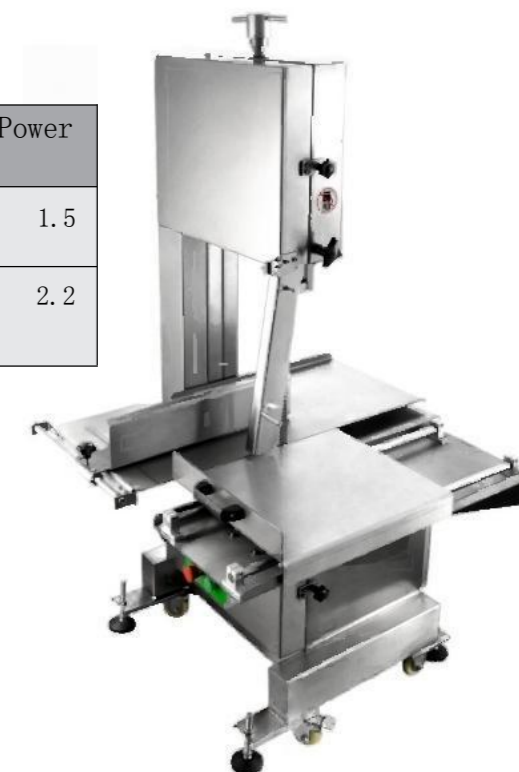
■Large bone sawing machine

Usage: Suitable for cutting various types of animal bones, frozen meat, etc. Ideal for use in restaurants, factory canteens, central kitchens, etc.

Features: Maximizes the lifespan of each saw blade; the automatic tensioning device ensures optimal tension adjustment; equipped with a sensor safety auto-stop switch; the adjustable saw blade protection cover can move up and down.

Technical Parameter

型号	Size(mm)	工作台尺寸	工作台高度	加工食品高度	锯带长度	Voltage	Power
DY-3606	880×770×1867	785×580	960	440×245	2580	220/380	1.5
DY-500E	1070×955×2100	860×870	960	566×345	3370	220/380	2.2



■ Chopping machine

Usage: Able to slice raw meat, smoked meat, fish, cheese, and sausages into preset thicknesses.

Features: Excellent safety protection; the machine immediately stops running when the discharge chute, door, or feed chute is opened; convenient tool disassembly; special design of the material claws prevents slipping; wide range of applications with high production output.

Technical Parameter

Name:	砍排机DY-21K
Size:	1950×1100×1500mm
Voltage:	380V
Power:	2.7kW
Yield:	155片/分
Thickness:	1-32mm adjustable
Name:	砍排机DY-25K
Size:	2000×1200×1500mm
Voltage:	380V
Power:	4.4kW
Yield:	200片/min
Thickness:	1-32mm adjustable



■ Vacuum rolling machine DY-300L

Usage: Allows meat to flip up and down inside the drum, collide, and impact each other, achieving the effect of massage and marination, while blending with auxiliary materials, additives, etc. in a vacuum state.

Features:

The entire machine is made of high-quality stainless steel, with a simple and stylish appearance and a reasonable structure. The entire machine's surface is treated with sandblasting, and the interior of the drum is treated with a mirror-like surface for easy cleaning.

This machine adopts an advanced programmable operating system with vacuum tracking functionality.

Built-in vacuum pump with multiple air filtration devices to effectively prevent materials from being drawn into the vacuum pump and foreign objects from entering the drum.

This system has storage capabilities, allowing different operating parameters to be stored in memory. One-touch parameter retrieval reduces operation time.

Technical Parameter

Size:	400×810×1450mm
Capacity:	300L
Power Specifications:	380V50Hz
Drive Power:	0.75kW
Vacuum pump:	1.5kW
Drum speed:	1~12rpm



■ Vacuum rolling machine DY-180L

Usage: This equipment allows meat to flip up and down inside the drum, colliding, impacting, achieving massage, and marinating effects, while uniformly blending with auxiliary materials, additives, etc. in a vacuum state.

Features: Meat flips up and down inside the drum, achieving a pounding and marinating effect; promotes even absorption of marinade, enhancing meat elasticity; made of stainless steel for convenient loading and unloading; runs smoothly with low noise; shortens soaking time, greatly improving work efficiency.

Technical Parameter

Size:	1380×840×980mm
Driver Power:	0.55kW
Vacuum Power:	0.75kW
Voltage:	380V 50HZ
Speed:	4R/min
Capacity:	250L



■ Vacuum rolling machine DY-1000L

Usage: This equipment facilitates the flipping of meat up and down inside the drum, allowing for collisions, impacts, massage, and marination, while ensuring uniform blending with auxiliary materials, additives, etc., in a vacuum state.

Features:

Enables meat to evenly absorb marinade, thereby enhancing meat adhesion and product elasticity; improves product texture and cross-sectional appearance; enhances water retention, increasing yield; improves the internal structure of the product.

Designed in a drum-style configuration, providing greater loading capacity.

Technical Parameter

Size:	1780×1120×1700mm
Capacity:	1000升
Discharge amount:	300-400公斤
Voltage:	380V50HZ
Power:	3kW



■ Vacuum refrigeration rolling machine DY-1700L

Usage: This equipment features vacuum extraction and refrigeration functions and can be connected to external refrigerants (such as ethylene glycol, liquid nitrogen, carbon dioxide). In a low-temperature vacuum state, it utilizes the principle of physical impact to allow meat to flip up and down inside the drum, enabling collisions, impacts, massage, and marination. It ensures that the temperature during the marination process remains within the required range, effectively controlling bacterial reproduction and preserving the freshness of meat products.

Technical Parameter

Host size:	约3100×1650×2100mm
Installation dimensions:	约4500×3000×3000mm
Roller Volume:	1700L
Capacity:	1000kg/次
Speed:	0-18r/min
Vacuum degree:	建议表压为-0.08Mpa
Power:	8.5kw(主轴电机4kW, 液压站(间歇工作)1.5KW真空泵3kW)
Voltage:	380V



■ Single shaft mixer DY-608

Technical Specifications:

Usage: Used for mixing sausages, meat, seasonings, and other materials to evenly blend different proportions of main and auxiliary ingredients.

Features: The entire machine is made of 304 stainless steel, with minimal clearance between the paddle and the barrel body. It employs the principle of human hand imitation for mixing, ensuring materials are not damaged and no dead angles are left, facilitating easy cleaning. The total rotation time can be set for automatic forward and reverse control, enhancing effectiveness.

Technical Parameter

Size:	1500×550×260mm
Voltage:	380V
Power:	1.5kW
Yield:	80kg/次



■ Mixer

Usage: Used for uniform mixing of materials.

Features: Stylish design, the entire machine is made of stainless steel 304 material; the mixing container is reversible, equipped with an automatic locking system and safety device; the mixing container and gearbox have double seals, with safety protection for stopping when the cover is opened; the forward and reverse rotation time can be set according to user requirements; the minimum mixing amount should not be less than 40% of the volume of the mixing container.

Technical Parameter

Size:	1370×610×1347mm
Voltage:	380V
Power:	1.5kW
Yield:	110L/80kg/次



■ Meat grinding and mixing all-in-one machine

Usage: Used for uniformly mixing fresh meat and grinding meat.

Features: Entirely stainless steel body with special surface sandblasting treatment; two independent IP×5 air-cooled motors, one for grinding meat and one for mixing; oil bath gear reducer with safety protection for stopping when the cover is opened; IP54 control panel; grinding and mixing components are easily removable without the need for tools; extended auger and pusher screw.

Technical Parameter

Size:	798×626×1305mm
Voltage:	380V
Power:	3kW
Yield:	800-1000kg/h



Meat Grinder

Usage: Used for grinding fresh boneless lean meat.

Features: The body and meat grinding components are made of stainless steel material, complying with food hygiene standards; seamless stainless steel body, waterproof and easy to clean; meat is minced by blade cutting instead of squeezing, resulting in delicious texture; special design of stainless steel meat grinding components for easy feeding and simple disassembly; double-sealed design for the main shaft drive of meat grinding, ensuring safety, reliability, and no food contamination; air-cooled motor suitable for continuous operation.

Technical Parameter

Size:	566×520×927mm
Voltage:	380V
Power:	1.5kW
Yield:	500kg/h



-5 ° meat grinder

Usage: Used for grinding boneless meat at temperatures as low as -5 degrees Celsius.

Features: The body and meat grinding components are made of stainless steel material, complying with food hygiene standards; seamless stainless steel body, waterproof and easy to clean; meat is minced by blade cutting instead of squeezing, resulting in delicious texture; special design of stainless steel meat grinding components for easy feeding and simple disassembly; double-sealed design for the main shaft drive of meat grinding, ensuring safety, reliability, and no food contamination; air-cooled motor suitable for continuous operation.

Technical Parameter

Size:	796×594×982mm
Voltage:	380V
Power:	3kW
Yield:	800-1000kg/h



Twisting and cutting integrated machine

Usage: Dual-purpose machine capable of both grinding fresh meat and slicing it into slices.

Features: The body and meat slicing components are made of stainless steel material, complying with food hygiene standards; sealed stainless steel body with double-sealed design for the main shaft drive of meat grinding, independent slicing knife assembly, convenient disassembly for easy cleaning; high-strength nylon gears made of food-grade engineering plastic; blade assembly gaskets for low noise and durability, without contaminating food; 420# stainless steel blades with special quenching process for high hardness, wear resistance, and corrosion resistance; safety protection baffle, micro-switch sensing, automatic shutdown when opened to ensure safe operation; air-cooled motor suitable for continuous operation.

Technical Parameter

Size:	515×480×850mm
Voltage:	220V/380V
Power:	0.75/1.1kW
Yield:	500kg/h



Conveyor type shredder

Usage: Designed for cutting fresh boneless lean meat into shredded form in one go, suitable for continuous operation.

Features: Stylish design, entire machine constructed from stainless steel 304 material; safety protection with automatic shutdown when opened; conveyor belt feeding for improved efficiency; safety protection with automatic shutdown when opened, single blade assembly for slicing, double blade assembly for shredding, easy switching between modes, convenient disassembly; equipped with dual motors for strong power and continuous output, suitable for continuous operation.

Technical Parameter

Size:	1406×797×1277mm
Voltage:	380V
Power:	3.7kW
Yield:	1500kg/h
Cutting size:	2-30mm optional



■ Poultry slitting machine

Usage: Designed to slice fresh, split poultry such as chicken and pigeon into strips in one pass, and into chunks in two passes, suitable for continuous operation.

Features: Stylish design, constructed entirely from stainless steel 304 material; special pressure roller design ensures smooth cutting without deviation for irregular materials; enlarged gaskets prevent deformation of blades during cutting process; multi-blade tooth design facilitates easy cutting of bone-in poultry; safety protection with automatic shutdown when opened.

Technical Parameter

Size:	2180×947×1248mm
Voltage:	380V
Power:	2.6kW
Yield:	1000kg/h
Cutting size:	6-30mm optional



■ 300L all steel tilting gas type soup pot pig trotters splitting machine

Usage: Designed to halve materials such as pig trotters, pork elbows, sheep hooves, and frozen fish in one pass.

Features: The conveyor belt features a PVC anti-slip design for stable operation, with adjustable width; the material inlet is equipped with a stainless steel protective cover for safer operation

Technical Parameter

Size:	1600*800*700mm
Voltage:	380v
Power:	2.25kw
Speed:	0.43m/s



■ 300L all steel tilting gas type soup pot

产地/品牌:	东莞/德盈
型号:	DY-TG300
容积:	300L
燃气量:	40000KCAL/H
Size:	1450*1030*1200mm



■ Tilting Gas Fryer

Brand:	东莞/德盈
model:	DY-CG150
Volume:	150L
Gas volume:	0.25KW/3PH/380V
Size:	400*1030*820mm





Single head electromagnetic integrated soup stove

- 1.DSP nanosecond high-speed processing chip, full-bridge dual-engine technology, digital phase-locked loop control, multi-level protection.
- 2.Open flame simulation control technology dynamically adjusts output and instantly locks current according to the material of the cookware to achieve optimal firepower.
- 3.Fully enclosed alloy aluminum shell core, using heat exchange principle to prevent circuit erosion from oil smoke, high temperature, and water vapor.
- 4.PPS "tooth" shaped wire reel assembly, hot air convection heat dissipation structure, reduces negative pressure coefficient, minimal loss, no bias fire, and no wire reel burning.
- 5.Can be equipped with the Dinglong cloud control system, allowing real-time viewing of the current working status of the equipment via a mobile phone. Can be equipped with Dinglong voice teaching system, with menu recording, recipe setting, and dual-screen hand-free switching functions.
- 6.LED color dynamic display screen, showing current gear, power, temperature, power, voltage, Chinese fault, and customizable time settings.
- 7.Alloy material firepower adjustment handle, ergonomic design, 9-speed 360-degree magnetic control firepower adjustment.
- 8.2.5mm thick 409 material - body stretched and flanged large pot, sturdy and durable.

名称	型号	Size	设备配置
单头电磁连体汤炉	DY-15KW-L	1000×1150×800/1200mm	汤桶 φ680×H550(180升) 304不锈钢 外壳厚: 侧板标厚: 1.0mm, 面板标厚: 1.5mm
	DY-20KW-L	1100×1150×800/1200mm	汤桶中780×F650(250升) 304不锈钢 外壳厚侧板标厚: 10mm, 面板标厚: 15mm
	DY-25KW-L	1200×1250×800/1200mm	汤桶 φ880×H550(320升) 304不锈钢 外壳厚: 侧板标厚: 1.0mm, 面板标厚: 15mm
	DY-30KW-L	1300×1350×800/1200mm	汤桶中980×H550(400升) 304不锈钢 外壳厚: 侧板标厚: 1.0mm, 面板标厚: 1.5mm



Single head electromagnetic large boiler (stove)

- DSP nanosecond high-speed processing chip, full-bridge dual-engine technology, digital phase-locked loop control, multi-level protection.
- Open flame simulation control technology dynamically adjusts output and instantly locks current according to the material of the cookware to achieve optimal firepower.
- Fully enclosed alloy aluminum shell core, utilizing heat exchange principles to prevent circuit erosion from oil smoke, high temperature, and water vapor.
- PPS "tooth" shaped wire reel component, featuring a hot air convection heat dissipation coefficient, minimal loss, no bias fire, and preventing wire reel burning.

名称	型号	Size	设备配置
单头电磁大锅炉 (灶)	DY-15KW-B	1000×1150×800/1200mm	中700大锅408板材20mm厚, 304不锈钢 外壳厚: 侧板标厚: 1.0mm, 面板标厚: 1.5mm
	DY-20KW-B	1100×1150×800/1200mm	中800大锅409板材20mm厚, 304不锈钢 外壳厚: 侧板标厚: 10mm, 面板标厚: 15mm
	DY-25KW-B	1200×1250×800/1200mm	中900大锅409板材2.5mm厚, 304不锈钢 外壳厚: 侧板标厚: 1.0mm, 面板标厚: 1.5mm
	DY-30KW-B	1300×1350×800/1200mm	1000大锅409板250mm, 3M 学: 侧板标厚: 1.0mm, 面板标厚: 1.5mm
	DY-35KW-B	500×1500×800/1200mm	φ1200大锅409板材3.0mm厚, 304不锈钢 外壳厚: 侧板标厚: 1.0mm, 面板标厚: 1.5mm



Double headed electromagnetic large boiler (stove)

名称	型号	Size	设备配置
双头电磁大锅炉 (灶)	DY-15KW*2-B2	2000×1150×800/1200mm	φ700大锅409板材 2.0mm厚, 304不锈钢 外壳厚 4
	DY-20KW*2-B2	2000×1150v0yt2	80048409Et 2.0mm厚 4不 则板标厚: 1.0mm, 面板 标厚: 1.5mm
	DY-25KW*2-B2	2300×1250×800/1200mm	中900大锅409板材 2.5mm厚, 304不锈钢外 壳厚 侧板标厚: 1.0mm, 面板标厚: 1.5mm
	DY-30KW*2-B2	2400×1350×800/1200mm	φ1000大锅409板材 2.5mm厚, 304不锈钢 外要 侧板标厚: 10mm, 面示厚: 15mm



Electromagnetic stir fryer

- Material: The entire machine shell is made of 304 stainless steel.
- Rated Voltage: 380V, 50Hz.
- Rated Power: 20KW.
- Drum: Utilizes a 430#①600 drum with a capacity of 40 liters (the effective capacity when the manually welded cow head pot is tilted at a 30° angle).
- Drum Material: Composite board.
- Display Screen: Features a 10-inch multifunctional touchscreen.
- Flipping Method: Electrically controlled flipping.
- Safety Protection: Equipped with emergency stop function.
- Temperature Measurement: Infrared testing.
- Menu: Stores 800 recipes.
- Voice Function: Intelligent voice function.
- Material Spraying: Automatic four-way material spraying with
- Material Receiving Tray: Pull-out type.
- Storage Shelf: Both sides of the box body come with top storage shelves.
- Cleaning Spray Gun: Equipped with high-quality high-pressure spray gun (comes with a two-meter hose).



名称	型号	Size
电磁炒菜机 (电动+喷料)	DYZCDD	1200×1150×1350mm



Adjustable cabinet type rice mixer

Equipped with an independently developed patented intelligent control system and integrated with a 4G IoT module.

Average rice dispensing speed: 2.5 seconds per serving.

Capable of setting various operation modes and recording parameters such as the number of servings and weight of rice dispensed. Allows remote monitoring of device operation status, remote optimization of operating software, and remote collection of operational data. Rice scraping mechanism features a hyperbolic curve deceleration motor with damping and fan. Customizable non-standard rice module also utilizes a hyperbolic curve deceleration motor with damping and fan. Rice quantity adjustment module model: MKX801610102.

Constructed with 304 stainless steel material throughout the machine, with rice-contacting components coated with food-grade Teflon non-stick oil.

Rice storage bin capacity: 60 kilograms.

Power Information:

Total power consumption: 160 watts.

Operating power supply: 220 volts at 50 hertz.



Automatic double outlet rice dispenser (basic model) DY-FFJ-001SC

Rice Scraping Mechanism: Equipped with a hyperbolic curve deceleration motor, featuring damping and a fan.

Customizable Non-standard Rice Module: Utilizes a hyperbolic curve deceleration motor, accompanied by damping and a fan.

Fully Automatic Stainless Steel Conveyor System: Powered by a 750W servo motor.

Automatic Rice Elevating System: Capable of lifting net weight up to 50kg of rice.

Huating Self-owned Patented Intelligent Control System: Integrated with a 4G IoT module.

Material: Entire machine constructed from 304 stainless steel, with rice-contacting components coated with food-grade Teflon non-stick oil.

Compatible Food Containers: Suitable for containers made of various materials, including stainless steel, food-grade PP/PC, transparent disposable containers, glassware, etc.

Technical Parameter

常规产能	4000+份/小时
Power	1.65kW (不含保温及消毒功能)
工作电源	220V/50Hz
整机净重	530Kg, 毛重: 550Kg
饭模克重	150g~500g (可调、可定制)
防水等级	IPX4
工作环境	-20~50℃ (温度), 95% (湿度)
储饭桶最大 Capacity	85L



Double chamber vacuum packaging machine DY-B600

Purpose: Suitable for vacuum packaging various solid, powdered, and pasty foods, medicines, specialty products, etc., to prevent oxidation and extend shelf life.

Features: It integrates vacuuming, sealing, and printing functions in one operation (capable of printing expiration date, production date, serial number, etc.). The machine body is made of stainless steel and controlled by a computer board programmed with the technical parameters required for packaging. It automatically completes the entire vacuum packaging process according to the preset program.

Technical Parameter

Size:	1410×740×960mm
Voltage:	380V
Power:	1.5kW
Yield:	1-6包/次

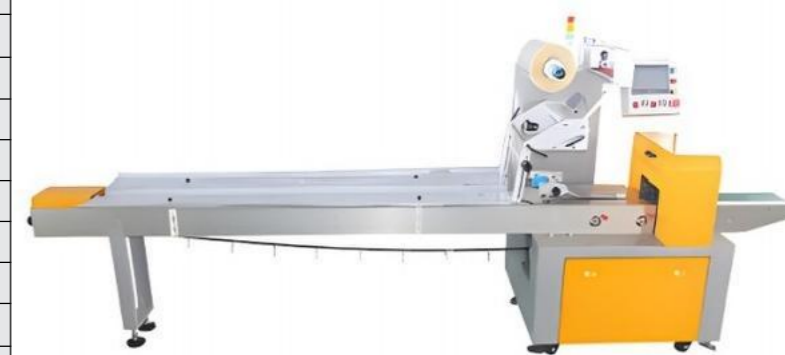


Pillow packaging machine DY-450

Three servo systems, bag length can be set and cut instantly, no need to adjust for empty running, saving time and film. Human-machine interface, convenient and quick parameter setting. Fault self-diagnosis function, clear display of faults. High-sensitivity photoelectric eye color mark tracking, digital input sealing and cutting position, making the sealing and cutting position more accurate. Temperature independent PID control, better suited for various packaging materials. Positioning stop function, non-stick knife, no film wastage. Simple transmission system, more reliable operation, easier maintenance. All controls are implemented by software, facilitating functional adjustments and technological upgrades, never falling behind.

Technical Parameter

包装膜宽	80/420mm
制袋宽度	30/200mm
制袋长度	150/680mm
产品高度	90mm 以内
包装速度	60-120包 (每分钟)
电源规格	2.8千瓦、220V
机器尺寸	3800×800×1500mm
机器质量	450kg
伺服电机	维控 750W
PIC	维控
触摸屏	维控
开关电源	明纬
固态继电器	阳明



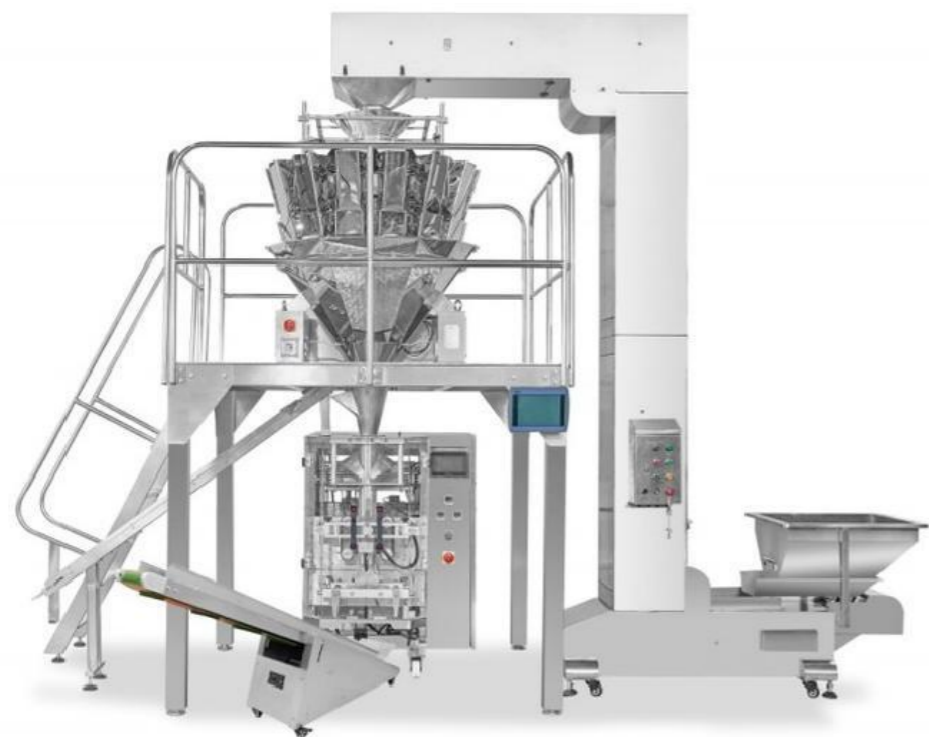


Vertical packaging machine DY-VP420

The entire machine is designed with advanced features and a rational structure, making adjustment, operation, and maintenance very convenient. The servo film feeding system provides precise positioning, and the synchronous belt film transportation ensures stability and reliability. The automatic error correction function saves time and film, enhancing the overall reliability and intelligence of the machine. It is equipped with various automatic alarm protection functions to minimize losses. This machine is matched with a measuring device, automatically completing the entire process of product metering, feeding, filling, bag making, date printing, inflation (exhaust), and finished product output. Bag type: Pillow bag.

Technical Parameter

型号	DYVP420	薄膜厚度	0.04~0.12mm
速度范围	5~90包/分	耗气量	0.8Mps, 0.5m3/min
膜宽范围	120~420mm	制袋类型	枕式袋
制袋尺寸	宽60~200mm 长50~300mm	外型尺寸	4423*2647*3690mm
使用电源	单相220v±5% 50~60HZ 2.2~3.9KW	包装膜材料	POPP/CPP, POPP/VMCPP, CPP/PE Ect
报警状态	①无袋无料报警停机 2)设备过载报警 ③低温、无色带报警		



Vacuum pre cooler DY-15A

This project is a set of equipment designed for rapid cooling and processing of food. Based on the physical property that the boiling point of water decreases as the pressure decreases, the pre-cooled food is placed in a vacuum chamber where the air is . When the pressure reaches a certain value, the water on the surface of the food begins to evaporate, taking away the heat from the interior of the food, thereby rapidly cooling the food overall. This process allows freshly cooked hot food to achieve rapid cooling while minimizing color and flavor changes, effectively bypassing the high reproduction period of bacteria, thus making the food safer and meeting higher hygiene standards.



Metal detector DY-810 (digital dual frequency detection)

Usage: Can be used for metal foreign object detection in industries such as vegetables, meat, toys, food (food additives, seasonings), pharmaceuticals, health products, cosmetics, etc. It can detect metal particles such as iron, copper, aluminum, stainless steel, etc., in bulk, bagged, bottled, and boxed products.

Features: LCD liquid crystal display, with a menu-style interface available in both Chinese and English, facilitating easy operation; high detection accuracy, with a newly designed circuit boasting exceptionally high sensitivity and phase adjustment technology for product customization, effectively suppressing product effects; capable of detecting various materials including iron, non-iron, stainless steel, copper, aluminum, and other non-ferrous metals; wide range of material detection, with strong anti-interference and shock resistance capabilities.

Technical Parameter

10cm、12cm、15cm、(其它离度可按要求定做, 翻口高度越满灵敏度相应降低)
40cm、50cm、60cm(或定制)
140cm(或定制)
15kg(或定制)
304不锈钢
FE φ 0.8-2.0mm, CU φ 1.5-2.5mm, SUS φ 2.0-3.5mm
约24m/min
蜂鸣器、LED声光报警, 并自动停机
1400×840×900mm



■ Fully automatic cling film packaging machine DY-BZ25

Usage: Suitable for various types of cling film (PVC/PE), both domestic and imported, saving costs; some foreign equipment can only use imported cling film. Packaging can be done with or without trays, and is suitable for various tray shapes (such as round, hexagonal, etc.).

Features:

The whole machine is made of stainless steel, suitable for corrosive environments such as high humidity; whereas some foreign equipment partially or completely does not use stainless steel and is prone to corrosion in harsh environments.

The interface design is simple, with rapid response, conforming to Chinese aesthetic and operational habits; compared to foreign equipment, it has lower noise levels and adopts special noise reduction processing for a more comfortable user experience.

5*30 overall welding processing, with equipment stability superior to that of similar foreign equipment.

Technical Parameter

Size:	3185*1015*1372mm
Voltage:	220V
Power:	1400W
速度:	20-25包/分钟
包装物长度:	120-350mm
包装物宽度:	95-220mm
包装物高度:	10-130mm
包装物重量:	50g-4.5kg
保鲜膜宽度:	350-550mm



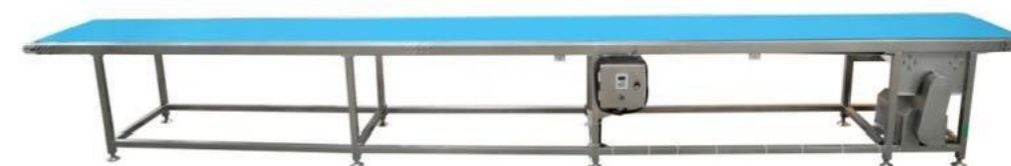
■ Dining tray conveyor (customized)

Usage: Used for conveying meal boxes to facilitate manual food distribution. Suitable for central kitchens and food processing plants.

Features: The equipment is customizable; operators stand on both sides, and meal boxes are conveyed through the middle conveyor belt, making it convenient for manual food distribution.

Technical Parameter

Size:	7000×600×850mm
Voltage:	380V
Power:	0.55kW



■ Automatic cling film packaging machine DY-BZ15

Usage: Suitable for various types of cling film (PVC/PE), both domestically produced and imported, saving costs; while some foreign equipment can only use imported cling film. Packaging can be done with or without trays, and is suitable for various tray shapes (such as round, hexagonal, etc.).

Features:

The entire machine is made of stainless steel, making it suitable for corrosive environments such as high humidity; whereas some similar foreign equipment partially or completely does not use stainless steel and is susceptible to corrosion in harsh conditions.

The interface design is simple, with rapid response, catering to Chinese aesthetic and operational habits; compared to foreign equipment, it has lower noise levels and adopts special noise reduction processing for a more comfortable user experience.

5*30 overall welding processing, providing equipment stability superior to that of similar foreign equipment.

Technical Parameter

Size:	988*736*1262mm
Voltage:	220V
Power:	1.8kW
速度:	15包/分钟
包装物长度:	80-350mm
包装物宽度:	80-270mm
包装物高度:	10-170mm
包装物重量:	40g-3kg
保鲜膜宽度:	350-500mm



■ Wind shower room DY-FL100 (customized)

Usage: When entering the clean area from the entrance, infrared sensing automatically performs bidirectional air blowing to remove dust.

Features: Fully automatic infrared sensing air blowing, with adjustable blowing time ranging from 1 to 99 seconds.

Technical Parameter

Size:	约1100×1100×2050mm
内尺寸:	约800×1100×1930mm
Voltage:	380V 50Hz



CUSTOMER CASE

客户案例

中央厨房车间



净菜加工车间



COOPERATIVE PARTNER

业务合作伙伴

